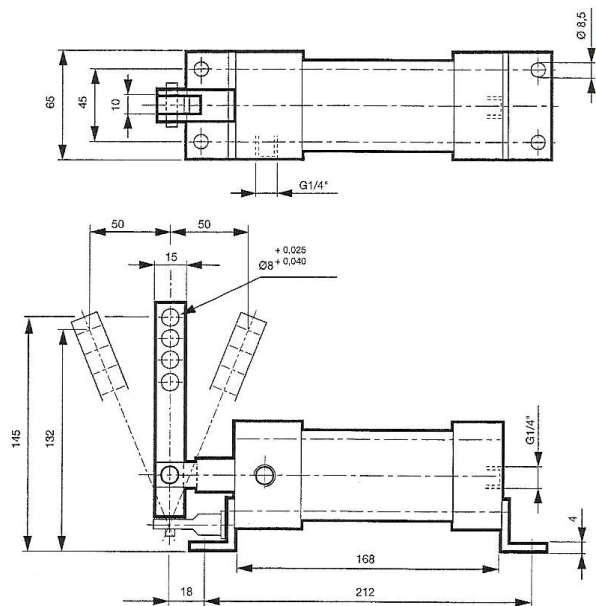
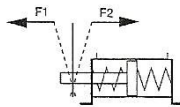
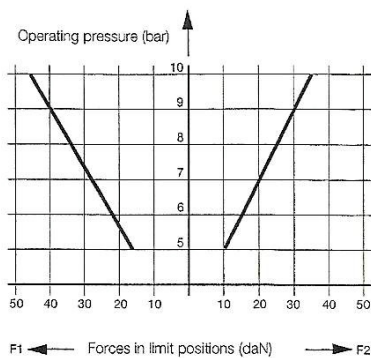
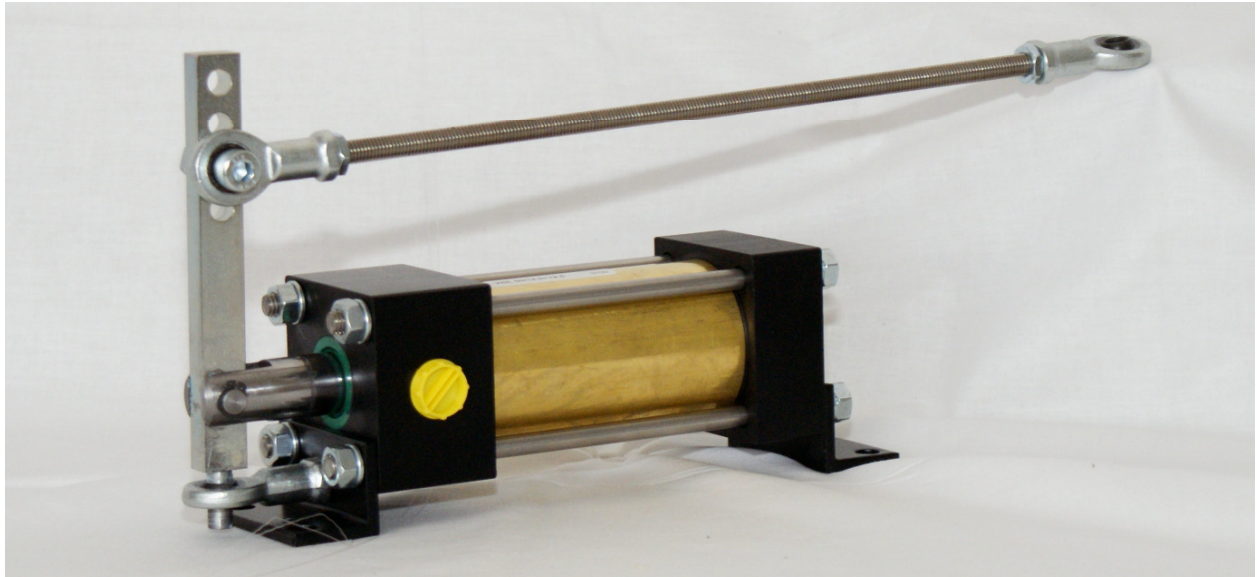


### 3-Position cylinder with springs for mid-position, type VBE 50/12,5+12,5



#### Function

The lever of this cylinder is held in mid-position by springs. Compressed-air pressure applied to either end of the piston causes the lever to turn in the desired direction.

#### Applications

This cylinder is particularly suitable for actuating the clutch of a motor.

#### Technical data

- Operating medium : compressed air, filtered to 50 $\mu$ , lubricated or not lubricated.
- Operating pressure : 5 - 10 bar
- Forces : (upper hole in lever):
  - in mid-position (at 0 bar): 7,5 daN
  - in limit position: see graph
- Connection : G 1/4"
- Temperature range : -10° up to +70° Celsius

Way of ordering : **VBE 50/12,5+12,5**