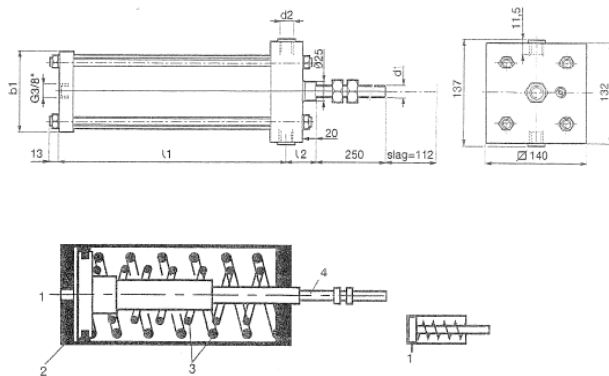
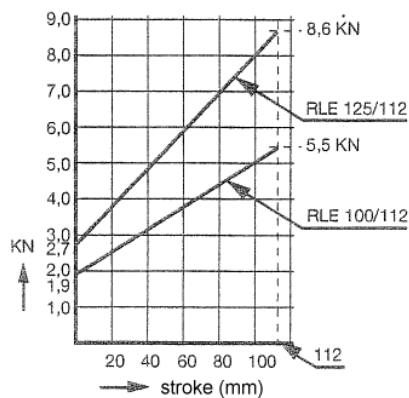
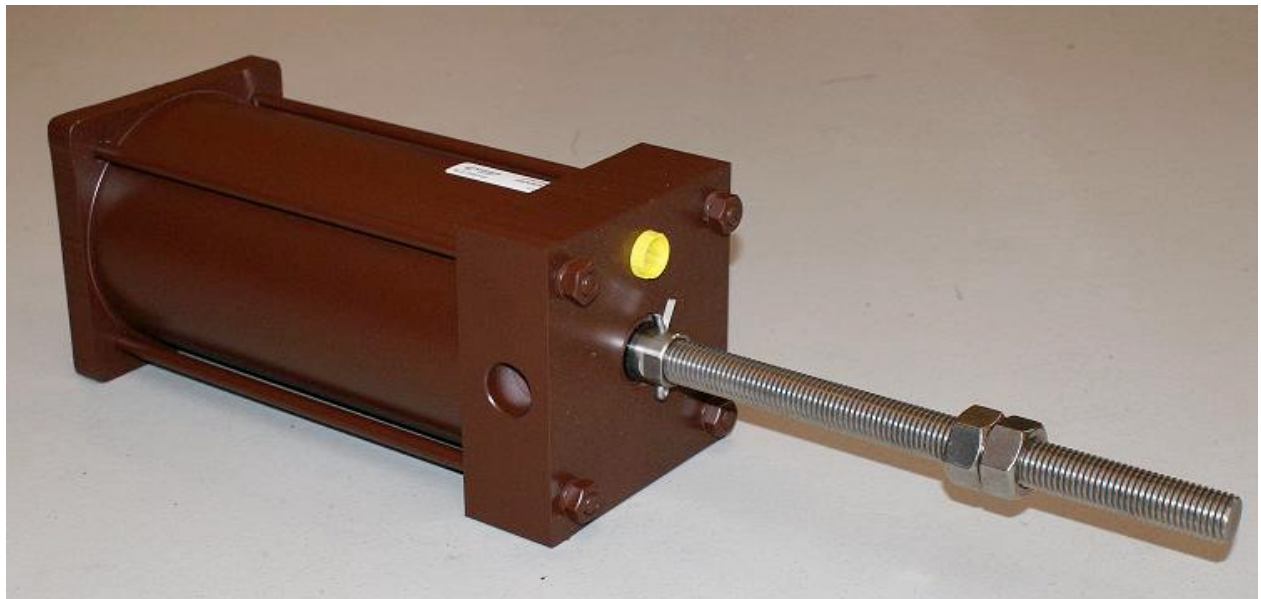


Air regulating cylinder, type RLE 100/112



type	b1	d1	d2	l1	l2
RLE 100/112	110	M16	choise 14 of 20	322	41
RLE 125/112	140	M20	choise 14 of 20	272	40

Function

The regulating cylinder will continuously assume a position depending on the applied control pressure.

Application

Brake systems of winches.

Operation

The control pressure applied via connection 1 acts to piston surface 2. The resulting force compresses control spring 3 to a certain distance: piston rod 4 moves along that distance. Every control pressure corresponds to a certain adjusting distance.

Technical data

- Bore : 0 – 112 mm
- Medium : compressed air filtered to min 40 μ , lubricated
- Control pressure : 2,7 – 7,4 bar
- Max. pressure : 10 bar
- Connections : G 3/8"
- Temp. range : -20° up to +70° Celsius

Way of ordering : **RLE100/112**