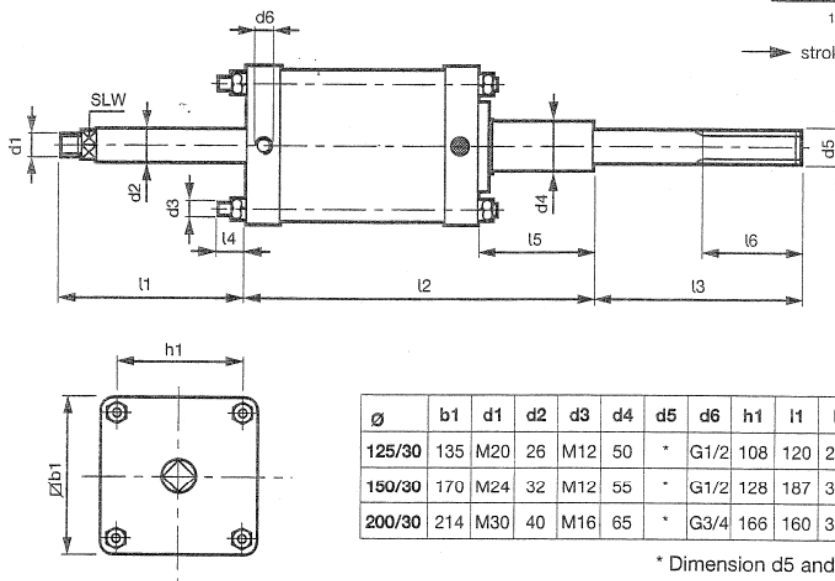
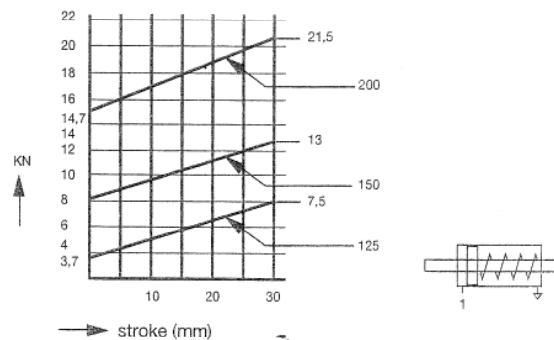
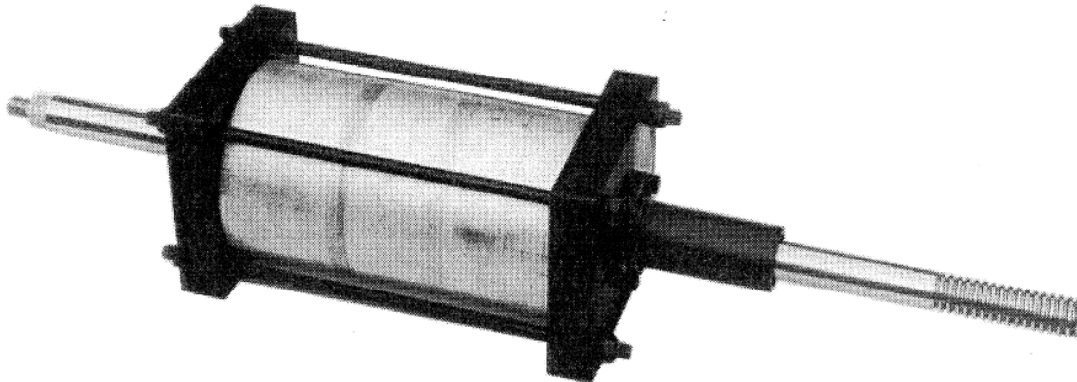


Pneumatic brake cylinder, type MD 125/30 EWV



Ø	b1	d1	d2	d3	d4	d5	d6	h1	l1	l2	l3	l4	l5	l6	SLW	Spring force kN
125/30	135	M20	26	M12	50	*	G1/2	108	120	240	310	45	160	*	22	F1=3,7 F2=7,5
150/30	170	M24	32	M12	55	*	G1/2	128	187	308	328	45	117	*	27	F1=8 F2=13
200/30	214	M30	40	M16	65	*	G3/4	166	160	335	340	55	120	*	36	F1=14,7 F2=21,5

* Dimension d5 and l6 to be specified when ordering

Function

This brake cylinder will assume a position depending on the control pressure applied.

Application

In general for braking anchor winches where spring forces determine the braking force.

Technical data

- Bore : Ø 125, 150, 200 mm
- Stroke : 30 mm
- Medium : compressed air, filtered to min. 50µ, and oil-mist lubricated.
- Pressure range : 2 – 8 bar
- Temp. range : -20° up to +70° Celsius

Way of ordering : **MD 125/30 EWV**