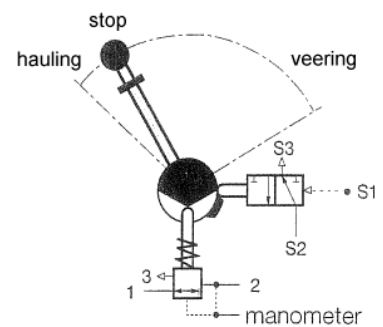


Lever operated pneumatic controller, type Servo A



Function

- By turning a lever out of the neutral "stop"-position:
- In one direction a pressure regulating valve is infinitely adjusted and with that the out-put pressure. Once set, the output pressure will be maintained, independent of the air consumption.
 - In the other direction a 3/2-way valve is operated after unlocking the lever.

Applications

Remote control for brakes and clutches of winches for hoisting, hauling and fishing.

Construction

- The controller consists of a construction suitable for panel mounting:
- With at one side, after building in visible, a rotatable lever and a cover with illuminated indication of the lever position.
 - With at the other side, yet to build in, a pressure regulating valve and a 3/2-way valve. With the lever, internal cams are rotated through which the pressure regulating valve and the 3/2-way valve are operated.

An adjustable brake is used to maintain the adjusted lever position after releasing.

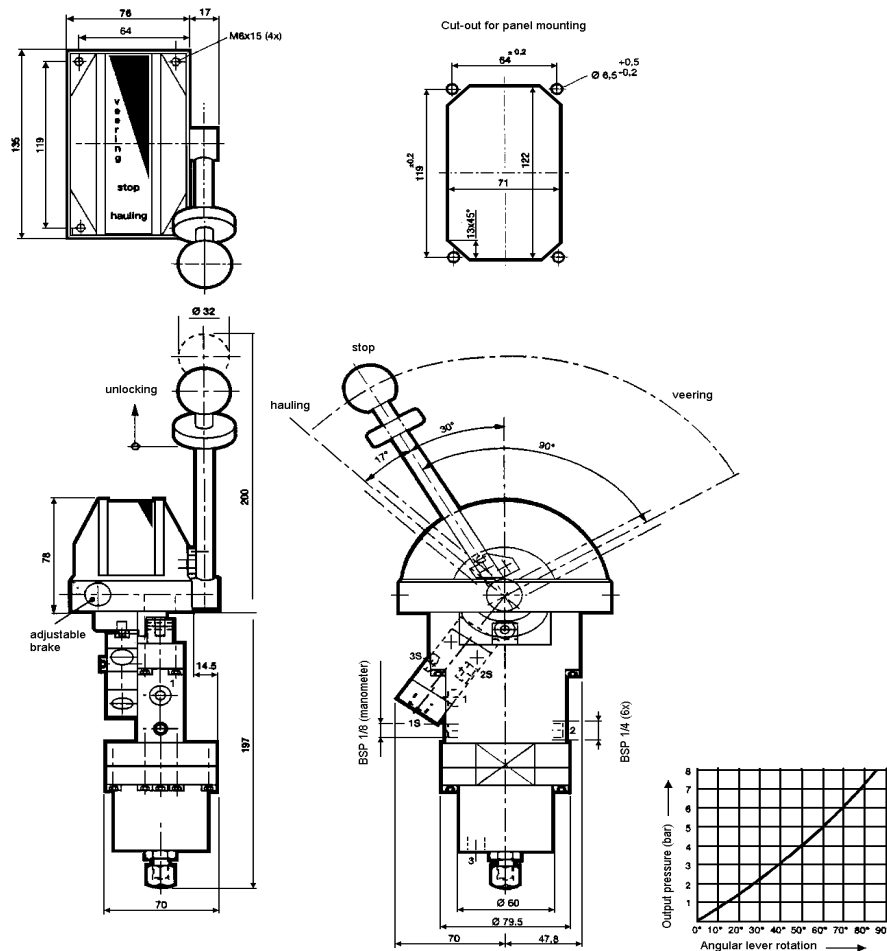
Operation

In one direction, the lever of the controller can be freely turned out of the neutral "stop"-position over the whole range, and remains in the adjusted position after releasing.

Turning the lever out of the neutral "stop"-position in the other direction is only possible after unlocking a ring around the lever by lifting manually. After turning the lever, a 3/2-way valve is operated. Also, in this position, the lever remains in this position after releasing.

The output pressure change of the regulating valve is almost linearly to the angular displacement of the lever.

Technical data/dimensions (mm)



Technical data

- Suitable for panel mounting
- Lever:
 - angular displacement out of the neutral "stop"-position:
 - in one direction max. 90° for adjusting the pressure regulator
 - in the other direction 17° for operating the 3/2-way valve
 - location: right - **R**, left - **L**
 - unlocking by pulling up the ring around the lever
 - adjustable brake
- Pressure regulator:
 - operating medium : compressed air, filtered to min. 50µ lubrication not necessary, dried air allowed
 - supply pressure : max. 10 bar
 - output pressure : 0 up to 8 bar (see graph)
 - hysteresis : max. 0,05 bar
 - orifice diameter : Ø 5 mm.
 - connections : • supply 1, output 2 and exhaust 3: G 1/4 (internal thread)
• manometer: G 1/8 (internal thread)
- 3/2-way valve with spring return:
 - operating medium : see pressure regulator
 - supply pressure : max. 10 bar
 - orifice diameter : Ø 5 mm.
 - connections : • supply 1S, output 2S and exhaust 3S: G 1/4 (internal thread)
- Scale : with position indication
- Illumination : 2 bulbs 28V/2W
- Protecting class : IP50
- Temperature range : -10° up to +70° Celsius
- Special models : on request

Way of ordering : **Servo A** - lever location

Example: Servo A - **R**